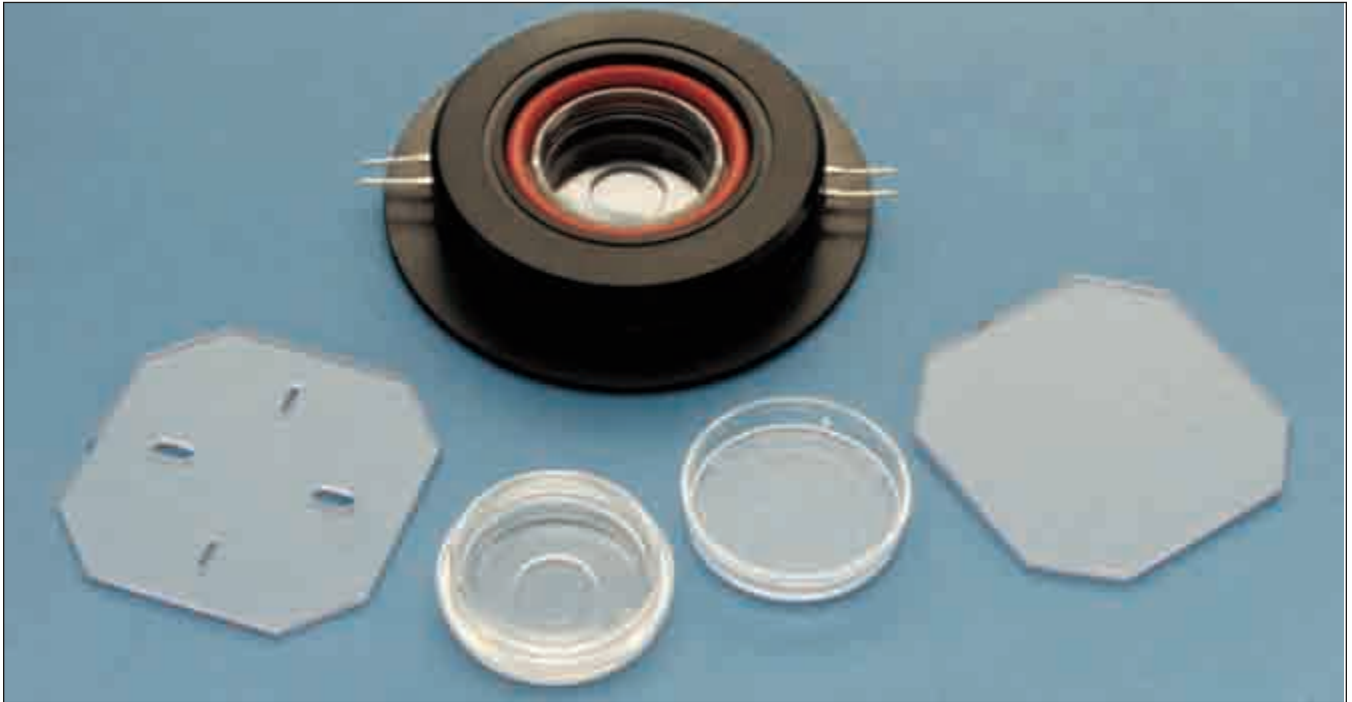


# micro-incubators

## DH-35

### Culture Dish Heater

Deep heating for 35 mm culture dishes



DH-35 Culture Dish Heater work with Corning 35 mm tissue culture dishes (Corning p/n 25000) and are designed for mounting on most microscopes. The holder is machined in two pieces. The top half is easily removed for replacement of dishes.

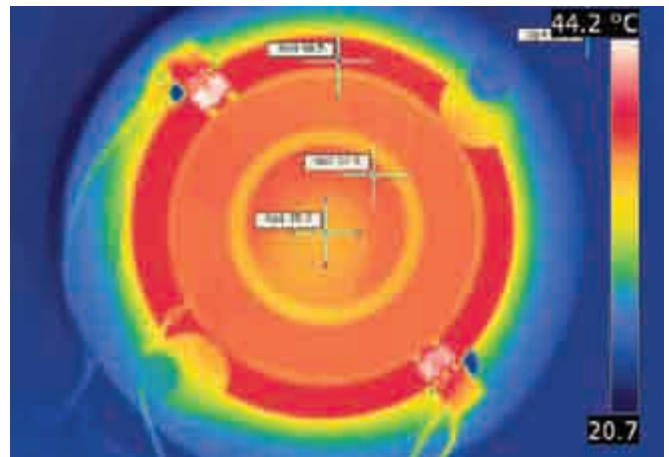
Dishes can be placed in the holder with or without dish covers. The holder is supplied with two additional holder covers, one of which has openings to allow for perfusion or insertion of probes or electrodes.

The base of the DH-35 has a 19 mm diameter aperture. Stage adapters are available for many microscopes, see pages 64 to 69. The DH-35 is used with the CC-28 Cable Assembly.

Corning P/h 2500 W4 65-0054 LU-PD Sleeve of plastic 35 mm dishes, pkg of 20, see page 175.

#### Specifications

Height	14.7 mm
Base ø	79.3 mm
Well	4 mm depth
Base Height	6.3 mm overall



Thermograph DH-35 with a Corning 35 mm Petri dish.

Order #	Model	Product
W4 64-0110	DH-35	Culture Dish Heater, 35 mm
W4 64-0106	CC-28	Cable Assembly for Heater Platforms
W4 64-0350	AR-1	Adapter Ring for Willco Dish

#### Popular Stage Adapter Microscopes

W4 64-0291	SA-NIK	Nikon Diaphot, TE200 & TE300
W4 64-0295	SA-OLY/2	Olympus IMT-2, IX & BX50WI
W4 64-0296	SA-20LZ	Zeiss Axiovert, Leica DMIRB & DMIL

For other microscopes, please consult our technical support department.