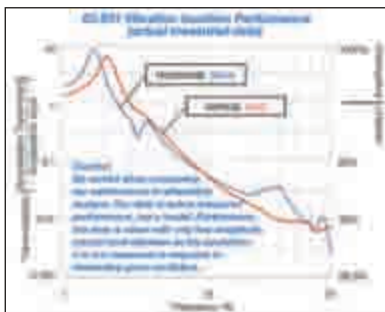


vibration isolation

63-500 Series High-Performance Lab Tables

- Vertical and horizontal isolation
- Gimbal piston™ isolators
- Aluminum height control valves
- Internal piston travel restraint
- Rugged built-in leveling feet
- Choice of tabletops



The 63-500 Series High-Performance Lab Table provides an excellent vibration-free working surface for loads up to 350 lb (160 kg). Now with modular construction, these tables are recommended for use in such diverse applications as electrophysiology, cell injection, ultramicrotomy, photomicroscopy, scanning tunnel microscopy, and confocal laser scanning microscopy.

Table Tops

Stainless Steel Laminate

Recommended for applications that require a strong magnetic attachment and will not involve repeated exposure of the top to corrosive liquids. This top does not have the precision flatness of our CleanTop II honeycomb top. Flatness is 0.030 in. (0.8 mm).

Plastic Laminate on Stainless Steel

An easy-to-clean alternative to stainless steel without sacrificing structural performance. A plastic laminate is added to the top surface, which reduces ferromagnetic attachment strength.

CleanTop II

Features a spill-proof, drilled and tapped mounting hole array. Tops are 4 in. (100 mm) thick and have 1/4–20 holes on 1 in. spacing or M6 holes on 25 mm spacing. The small cell-size steel honeycomb design provides stiffer damping than the stainless steel laminate. Guaranteed flat to 0.005 in. (0.13 mm).

Accessories

Front and Rear Support Bars

These adjustable steel rails mount on the table's front and rear legs. They may be cantilevered and have slots in which shelves can be mounted. A front support bar is required for use with 60-4555 armrest pads. A front and rear support bar is required for use with sliding shelves. Support bars cannot be used in conjunction with the Faraday cage.

Armrest Pads

Available for both Faraday cage and non-Faraday cage applications. Adjustable leather forearm rests fasten to the Front



Support Bar or Perimeter Enclosure and can slide from side to side for added comfort. Sold in sets of two pads.

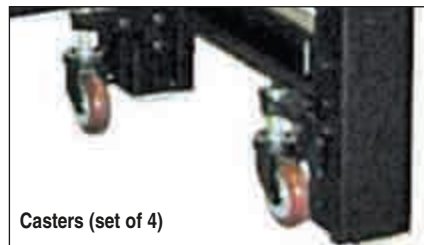


Sliding Shelves for Non-Faraday Cage Applications

Sliding shelves are made of wood with white plastic laminate covering all sides. Available in 6, 10, 14 and 20" widths. A metal bracket on the front edge of the shelf fits into the slot in the front support bar. Shelves slide freely from side to side and are easily lifted from the support bars. Built-in stops prevent shelves from sliding out of slots.

Casters

A set of four retractable casters with a total weight capacity of 1,000 lb (450 kg) can be mounted to the base of the table legs. Fits all tables.



Casters (set of 4)

Fixed Full-Perimeter Enclosures

A fixed, welded-steel structure that completely surrounds the table top to provide non-isolated support for the Faraday Cage and the sliding side shelf. Only accepts 8" wide Sliding Side Shelf.

Type II Faraday Cage

The Type II Faraday Cage offers improved access and simplified assembly. The "window-shade" type retracting front panel is easy to operate and causes reduced disturbance when adjusted. The front panel may be positioned anywhere between fully opened and fully closed, and stays in position without a fastener. The Type II Faraday cage requires the full-perimeter enclosure to mount to the 63-500 Series table.



Type II Faraday Cage

Sliding Shelf for Faraday Cage Applications

An 8" wide shelf that slides freely from side to side within the Faraday cage enclosure.

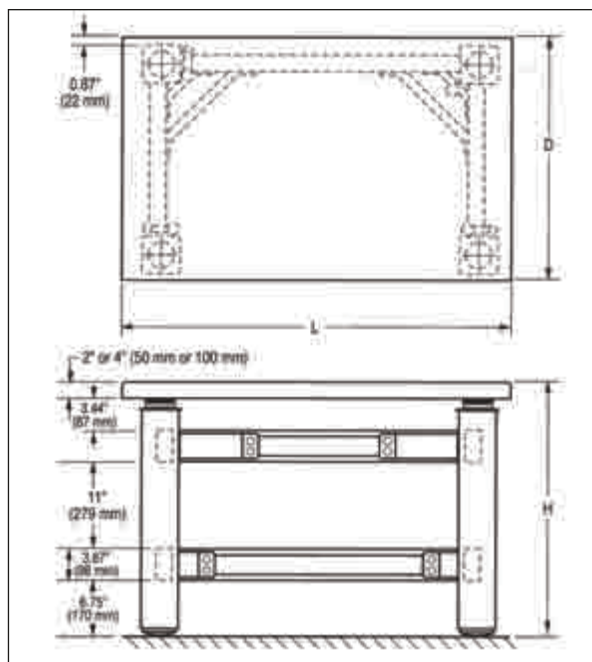
vibration isolation

63-500 Series

High-Performance Lab Tables

Specifications

Vertical natural frequency:		
High Input		1.2 Hz
Low Input		1.5-2.0 Hz
Isolation efficiency @ 5Hz		70-85%
Isolation efficiency @ 10Hz		90-97%
Horizontal natural frequency:		
High Input		1.0 Hz
Low Input		1.2-1.7 Hz
Isolation efficiency @ 5Hz		75-90%
Isolation efficiency @ 10Hz		90-97%
Gross load capacity	1400 lb (640 kg)	
Net load capacity	350 lb (160 kg)	
Finish	Black powder coat frame Stainless steel top	
Facilities required	80 PSI	



Tables

Description	25" x 36"	30" x 30"	30" x 36"	30" x 48"	36" x 48"
Stainless steel top	W4 60-4750	W4 60-4751	W4 60-4752	W4 60-4753	W4 60-4754
Plastic laminate top	W4 60-4755	W4 60-4756	W4 60-4757	W4 60-4758	W4 60-4759
Cleantop II, 1/4-20 thread	---	---	---	W4 60-4760	W4 60-4761
Cleantop II, M6 thread	---	---	---	W4 60-4763	W4 60-4764

Accessories for Non-Faraday Cage Applications

Description	25" x 36"	30" x 30"	30" x 36"	30" x 48"	36" x 48"
Front support bar	W4 60-4536	W4 60-4535	W4 60-4536	W4 60-4537	W4 60-4537
Rear support bar	W4 60-4540	W4 60-4539	W4 60-4540	W4 60-4541	W4 60-4541
Armrest pads (set of 2)	W4 60-4567	W4 60-4567	W4 60-4567	W4 60-4567	W4 60-4567
Sliding shelf, 6" wide	W4 60-4543	W4 60-4547	W4 60-4547	W4 60-4547	W4 60-4551
Sliding shelf, 10" wide	W4 60-4544	W4 60-4548	W4 60-4548	W4 60-4548	W4 60-4552
Sliding shelf, 14" wide	W4 60-4545	W4 60-4549	W4 60-4549	W4 60-4549	W4 60-4553
Sliding shelf, 20" wide	W4 60-4546	W4 60-4550	W4 60-4550	W4 60-4550	W4 60-4554
Casters (set of 4)	W4 60-4798	W4 60-4798	W4 60-4798	W4 60-4798	W4 60-4798

Accessories for Faraday Cage Applications

Description	30" x 36"	30" x 48"	36" x 48"
Faraday Cage	W4 60-4799	W4 60-4800	W4 60-4801
Perimeter enclosure for stainless steel and laminated tops (required for cage)	W4 60-4804	W4 60-4806	W4 60-4808
Perimeter enclosure for Cleantop tops (required for cage)	W4 60-4805	W4 60-4807	W4 60-4809
Armrest pads (set of 2)	W4 60-4568	W4 60-4568	W4 60-4568
Hanging shelf	W4 60-4571	W4 60-4572	W4 60-4572
Sliding side shelf, 8" wide	W4 60-4811	W4 60-4811	W4 60-4815
Casters (set of 4)	W4 60-4798	W4 60-4798	W4 60-4798